



Alumni and Eagle Scout Alumni Associations

Scouting America's Alumni Communities, including the Cascade Pacific Council (CPC) Alumni / Eagle Scout Alumni Associations (ESAA), Silver Beaver Alumni Association (SBAA), and our various council Camp Alumni Association groups, consist of alumni-focused organizations whose members share common experiences, interests, and locations. These shared traits enable members to vividly relive their memories through mutual recollection and storytelling.

Our Vision

To create opportunities for alumni-centric groups to better assist and support Scouting.

Our Mission

To establish, enhance, and promote groups, partners, and associations possessing shared experiences that foster continued active engagement with Scouting on behalf of Scouting alumni.

Our Motto

Once a Scout, Always a Scout

Goals

- Our goal with the CPC Alumni / Eagle Scout Alumni Associations is connection: to give you a place to stay engaged and get connected to the incredible impact Scouts, volunteers, and alumni like you have on our local communities.
- For each position description, the goal is to develop a team consisting of 1 representative from each Alumni group: Young Adult Alumni (mentee), Parent-age individuals and/or Empty Nesters (mentors). The team will have representatives in touch with their respective age groups within the council and districts. This will also enable the Young Adult Alumni have opportunities to be mentor by Parent-age individuals and Empty Nestors. Our Young Adult Alumni are our future leaders.
- Many Scouters often serve in multiple roles. The CPC Alumni Association, along with our affiliate groups including the CPC ESAA, CPC SBAA, and various council Camp Alumni Association groups, advocate for focusing on a single role. This approach ensures the most positive outcomes for the Alumni Association, our other affiliate groups and provides opportunities for greater individual involvement. Our aim is to achieve success without causing burnout among our volunteers by overburdening them with multiple responsibilities.
 - However, if volunteers want to serve on multiple alumni association committees, they are welcome, but we would encourage them to review their other Scouting commitments.

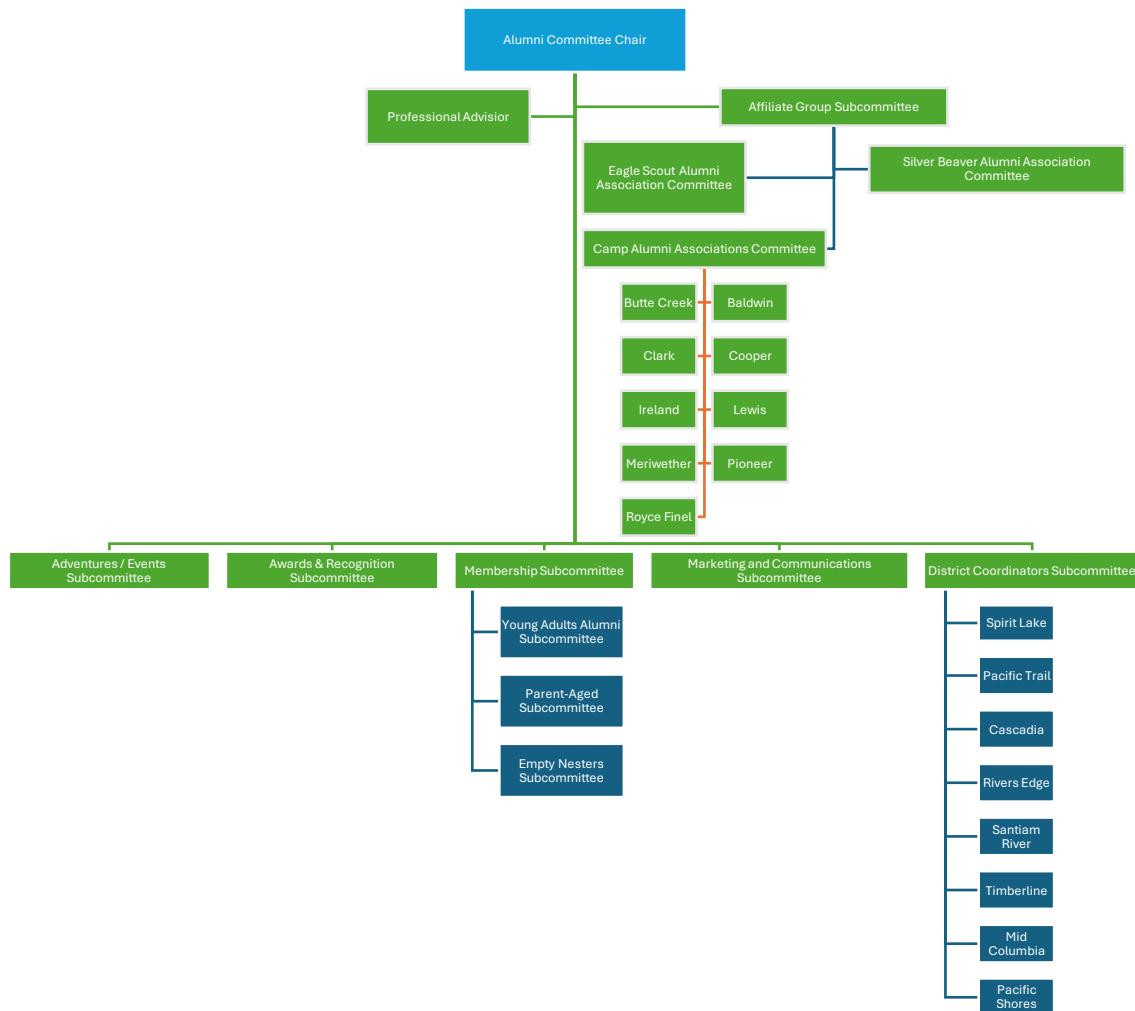


Alumni and Eagle Scout Alumni Associations

Representative Groups

- Young Adults Alumni (18-30) – Purpose: many young adults desire to “continue Scouting” but do not have ways to stay connected beyond their own unit. They also need purpose, mentorship connections and direction for their lives.
- Parent-Aged (30-50) – Purpose: ensure “feel good” brand awareness and connection to Scouting as this group becomes parents. Give opportunities to stay engaged for those who do not become parents. Give them the opportunity to mentor the Young Adults Alumni.
- Empty Nesters (50+) – Purpose: ensure “Loyalty For Life.” with lifelong engagement opportunities and mentoring.

Cascade Pacific Council Alumni Association Org Chart





Alumni and Eagle Scout Alumni Associations

Position Title: CPC Alumni / Eagle Scout Alumni Associations Empty Nesters Subcommittee

Position Description: The Empty Nesters Subcommittee will develop a team consisting of 1 representative from each Alumni group: Young Adult Alumni (mentee), Parent-aged individual and/or Empty Nester (mentors) to identify and recruit individuals in running and developing social, networking and recognition events for the CPC Alumni Association and CPC NESA programs.

Deliverables: The Empty Nesters Subcommittee will help identify and recruit individuals in running and developing social, networking and recognition events for the CPC Alumni / Eagle Scout Alumni Associations.

Timeframe: 1 year commitment with a potential extension of 2 years, 3 years total.

Qualifications & Requirements:

- Those individuals who are chairs or co-chairs should be registered with Scouting America (<https://my.scouting.org>)
 - Updated Safeguarding Youth Training (<https://cpcscouting.org/about/safeguarding-youth/>)
- Become a Scouting America Alumni member; <https://directory.scouting.org> (free)
- Independently driven
- Leadership and mentorship skills
- Large community network
- Belief in the mission of Scouting

Duties and Responsibilities:

- Recruit 2-4 volunteers, which should include young adults, parents and empty nesters, to the CPC Alumni Association Empty Nesters committee.
- Assist in recruiting volunteers for the CPC Alumni Association Subcommittees.
- Assist the CPC Alumni / Eagle Scout Alumni Associations Adventures / Events Subcommittee in promoting and conduct Alumni / Eagle Scout Alumni Associations activities for the council and district levels. Activities could include adventures, social, networking and recognition events.
 - If any event has a structured speaker this should include a youth speaker as well.
- Assist in conducting an annual survey of alumni to determine council wishes for adventures/events.
- Distribute CPC Alumni / Eagle Scout Alumni Associations marketing materials at a public event to alumni and learn about their Scouting experiences.
- Promote CPC Alumni / Eagle Scout Alumni Associations activities to all communities inside and outside of Scouting.



Alumni and Eagle Scout Alumni Associations

- Should be consistent with Council and National policies.

Time commitment (projected):

- One-to-two-hour monthly and/or quarterly meetings, either by a Zoom call, face to face or both, depending on the needs of the council committee.
 - Meeting may or may not be with a professional staff member.
- Ongoing communication with current CPC Alumni / Eagle Scout Alumni Associations Membership Subcommittee.

Organizational Relationship: The CPC Alumni Association Parents Subcommittee Co-Chairs reports to the CPC Alumni Association Membership and/or the volunteer CPC Alumni Association Chair and works cooperatively with the Council Advisor (full time professional Scouter).

Please Note: There will be cases in which our volunteer teams will need to take a bigger share of the workload for administrative tasks, and there will be instances where no staff advisor will be assigned to an event or committee. The Council's Board, Senior Leadership Team, and Officers will be working with each other to make these determinations and ensure that communication about these changes is clear and timely.