



Alumni and Eagle Scout Alumni Associations

Scouting America's Alumni Communities, including the Cascade Pacific Council (CPC) Alumni / Eagle Scout Alumni Associations (ESAA), Silver Beaver Alumni Association (SBAA), and our various council Camp Alumni Association groups, consist of alumni-focused organizations whose members share common experiences, interests, and locations. These shared traits enable members to vividly relive their memories through mutual recollection and storytelling.

Our Vision

To create opportunities for alumni-centric groups to better assist and support Scouting.

Our Mission

To establish, enhance, and promote groups, partners, and associations possessing shared experiences that foster continued active engagement with Scouting on behalf of Scouting alumni.

Our Motto

Once a Scout, Always a Scout

Goals

- Our goal with the CPC Alumni / Eagle Scout Alumni Associations is connection: to give you a place to stay engaged and get connected to the incredible impact Scouts, volunteers, and alumni like you have on our local communities.
- For each position description, the goal is to develop a team consisting of 1 representative from each Alumni group: Young Adult Alumni (mentee), Parent-age individuals and/or Empty Nesters (mentors). The team will have representatives in touch with their respective age groups within the council and districts. This will also enable the Young Adult Alumni have opportunities to be mentor by Parent-age individuals and Empty Nestors. Our Young Adult Alumni are our future leaders.
- Many Scouters often serve in multiple roles. The CPC Alumni Association, along with our affiliate groups including the CPC ESSA, CPC SBAA, and various council Camp Alumni Association groups, advocate for focusing on a single role. This approach ensures the most positive outcomes for the Alumni Association, our other affiliate groups and provides opportunities for greater individual involvement. Our aim is to achieve success without causing burnout among our volunteers by overburdening them with multiple responsibilities.
 - However, if volunteers want to serve on multiple alumni association committees, they are welcome, but we would encourage them to review their other Scouting commitments.

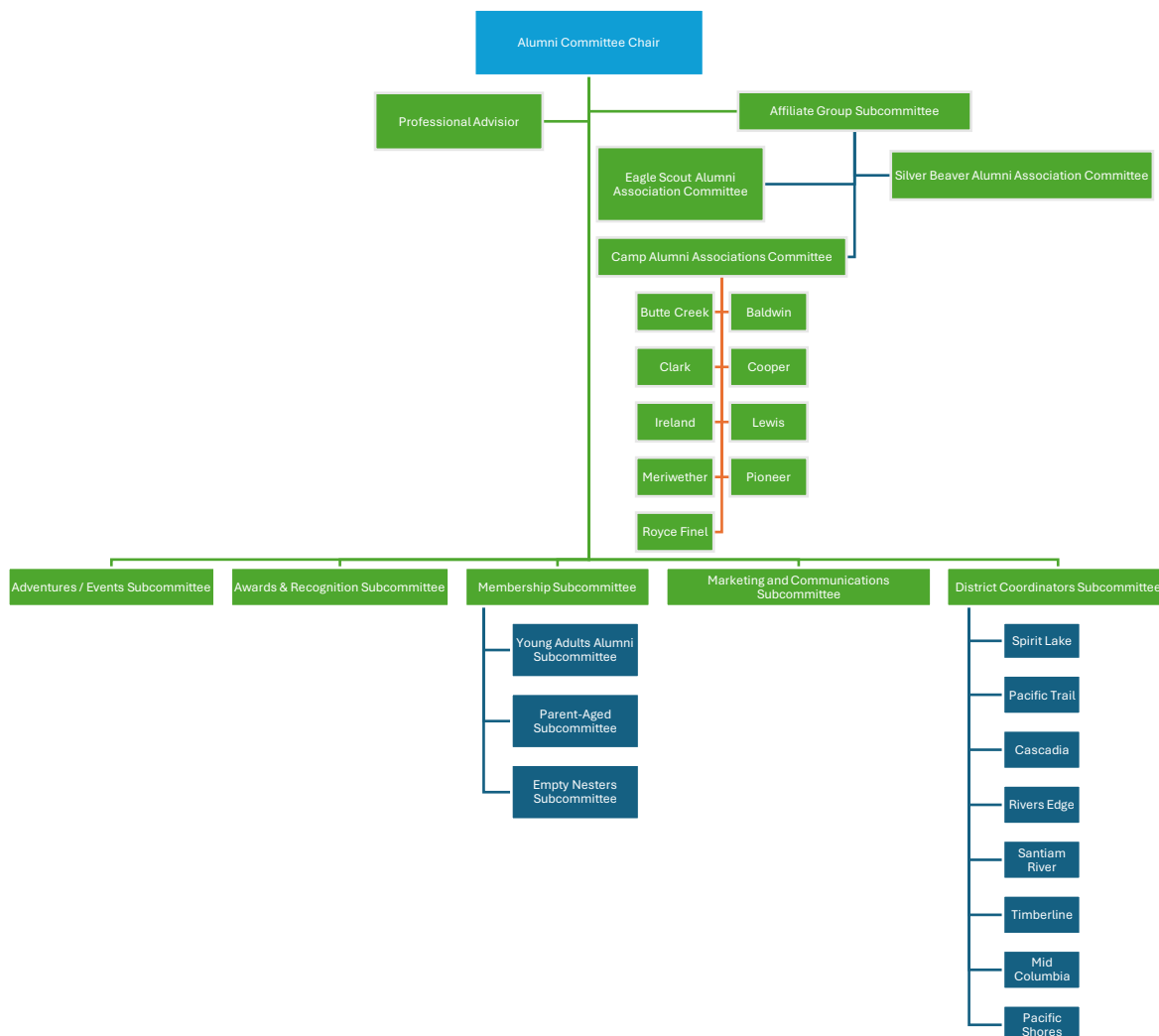


Alumni and Eagle Scout Alumni Associations

Representative Groups

- Young Adults Alumni (18-30) – Purpose: many young adults desire to “continue Scouting” but do not have ways to stay connected beyond their own unit. They also need purpose, mentorship connections and direction for their lives.
- Parent-Aged (30-50) – Purpose: ensure “feel good” brand awareness and connection to Scouting as this group becomes parents. Give opportunities to stay engaged for those who do not become parents. Give them the opportunity to mentor the Young Adults Alumni.
- Empty Nesters (50+) – Purpose: ensure “Loyalty For Life.” with lifelong engagement opportunities and mentoring.

Cascade Pacific Council Alumni Association Org Chart





Alumni and Eagle Scout Alumni Associations

Position Title: CPC Alumni / Eagle Scout Alumni Associations Affiliate Group Subcommittee

Position Description: The Affiliate Group Subcommittee will develop a team consisting of 1 representative from each Alumni group: Young Adult Alumni (mentee), Parent-aged individual and/or Empty Nester (mentors) to identify and recruit those persons needed to lead the Affiliate Groups, CPC ESAA, CPC SBAA and CPC Camp Alumni Association.

Deliverables: To help lead, coordinate and support the Affiliate Groups, CPC ESAA, CPC SBAA and CPC Camp Alumni Association.

Timeframe: 1 year commitment with a potential extension of 2 years, 3 years total.

Qualifications & Requirements:

- Those individuals who are chairs or co-chairs should be registered with Scouting America (<https://my.scouting.org>)
 - Updated Safeguarding Youth Training (<https://cpcscouting.org/about/safeguarding-youth/>)
- Become a Scouting America Alumni member; <https://directory.scouting.org> (free)
- Independently driven
- Leadership and mentorship skills
- Large community network
- Belief in the mission of Scouting

Duties and Responsibilities:

- Recruit 2-4 volunteers, which should include young adults, parents and empty nesters, to the Affiliate Group subcommittee.
- Gather information on the other Scouting Affiliate and Affinity Groups.
- Assist in recruiting volunteers to each of the Affiliate Groups, CPC ESAA, CPC SBAA and Camp Alumni Association, if necessary.
- Build a quarterly roundtable-like meeting to communicate with the Affiliate Groups, CPC ESAA, CPC SBAA and CPC Camp Alumni Association.
 - Communicate any local alumni meetings and/or events.
- Attend CPC Alumni / Eagle Scout Alumni Associations adventures/engagement events to recruit new members to the program.
- Promote camp association, CPC Alumni / Eagle Scout Alumni Associations activities to all communities inside and outside of Scouting.
- Create avenues for cross promotion between the other Scouting Affiliate Groups.
- Should be consistent with Council and National policies.



Alumni and Eagle Scout Alumni Associations

Time commitment (projected):

- One-to-two-hour monthly and/or quarterly meetings, either by a Zoom call, face to face or both, depending on the needs of the subcommittee.
 - Meeting may or may not be with a professional staff member.
- Ongoing communication with the CPC Alumni Association Chair.

Organizational Relationship: The Affinity Group Subcommittee reports to the volunteer CPC Alumni Association Chair and works cooperatively with the Council Advisor (full time professional Scouter).

Please Note: There will be cases in which our volunteer teams will need to take a bigger share of the workload for administrative tasks, and there will be instances where no staff advisor will be assigned to an event or committee. The Cascade Pacific Council's Board, Senior Leadership Team, and Officers will be working with each other to make these determinations and ensure that communication about these changes is clear and timely.